



METMINEC (PTY) LTD
MINING THE FUTURE

COMPANY **PROFILE**



TABLE OF CONTENTS

- COMPANY OVERVIEW
- MISSION & VISION OUR PLEDGE
- VALUES
- SERVICES
 - EXPLORATION DRILLING
 - CONTRACT MINING-DRILL AND BLAST
 - OTHER SERVICES
- MINING SCOPE
- ENGINEERING SCOPE
- PLANT MAINTENANCE SCOPE
- GIS (GEOGRAPHIC INFORMATION SYSTEM)
- GEOPHYSICS SERVICES
- MINERAL PROCESSING ADVISORY
- TRAINING
- DESIGN SOFTWARE & TOOLS
- CLIENTS
- BUSINESS CONTACT INFORMATION



ABOUT US

EXECUTIVE SUMMARY

Metminec is a 100% black owned company and we offer Geological services, mining support services and engineering consulting services. We provide a full range of exploration services including targeting studies, contract geologist and field assistant staff and turn-key exploration management. This is complemented by our suite of consulting services. Our exploration and consulting geologists have strong technical and operational experience from working in the South African mining industry in a wide range of commodities. Our senior consultants work closely with clients to design and implement exploration strategies.



VISION

To assist clients in achieving their business goals by offering top tier consulting, mining solutions and technical services

MISSION

To be a leading and reliable partner of choice in the mining sector.

VALUES

METMINEC Safety, Health and Environment (SHE) policy and practices centres around a zero-harm philosophy towards people, host communities and the environment. Although the company offers services with differing governance standards, it consistently enforces a standard approach to SHE and does not compromise its standards of conduct when conducting services. We Value the following as a organization

- Excellence
- Customer Service
- Community
- Transparency
- Accountability
- Teamwork
- Innovation
- Continuous Learning
- Integrity



OUR PLEDGE

- We pledge to provide you with technical sound exploration, mining, mineral processing advise to grow your business.
- To guide your investment into the mineral Industry with latest minerals value and provide accurate assets valuations across other sectors.
- To protect your interest by providing you with systems to achieve compliance.
- To maintain confidentiality and act with integrity at all times.

INDUSTRIES WE SERVE

Metminec is a progressive and multi-disciplinary company of consulting geoscientists and affiliated industry professionals offering a complete range of services in mining and mineral resource exploration, geotechnical site investigation, mining geology, coal quality, resource analysis, geological modelling, research and development, coal bed methane, hydrogeology and environmental management. Our major focus is providing excellent support and service to our clients. We serve the following industries

- Geology
- Mining
- Mineral Processing
- Smelting & Refining
- Infrastructure
- Industrial
- Oil & Gas
- Renewable Energy



OUR SERVICES GEOLOGICAL SERVICES

- Exploration and Drilling Support
- Geophysics Services
- Mine Geological and Geotechnical Support
- Mineral Resource and Reserve Valuation
- Feasibility Studies
- Due Diligence Report
- Mineral Processing Advice
- Ore Structural Modelling
- Geological Block Modelling
- Resource Estimation
- Due Diligence & Competent Persons Report

MINING ENGINEERING

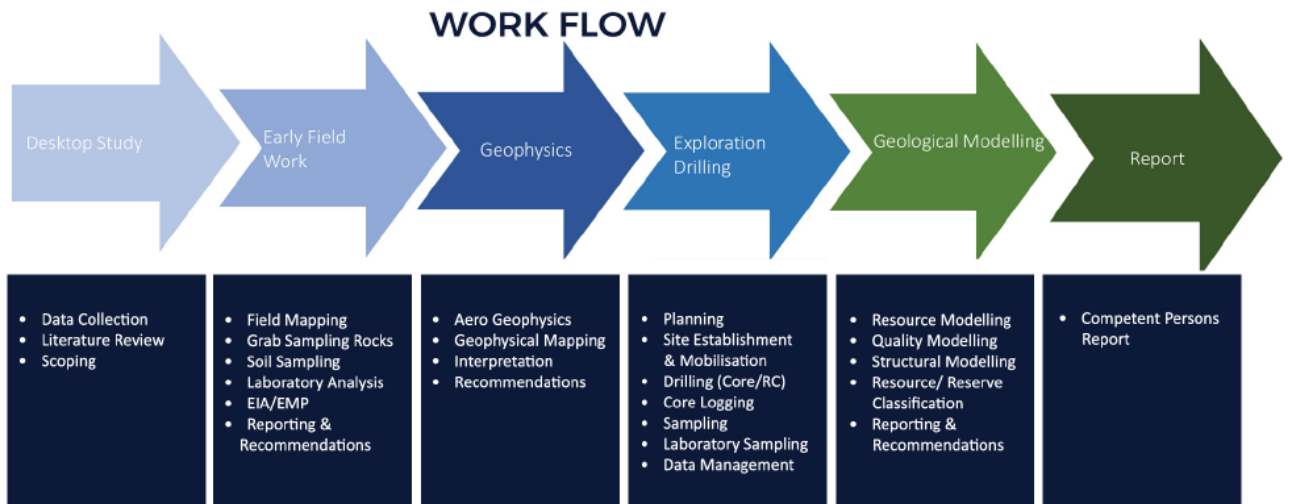
- Mining Evaluation
- Transactional Advisory
- Mine Modelling of Coal Reserves
- Mining Feasibility Studies
- Expansion Studies & Design
- Due Diligence & Mining Technical Reviews
- Independent Technical Reports & reviews
- Resource to Reserve Conversions

MINING RELATED INFRASTRUCTURE ENGINEERING SERVICES

- Mechanical, Electrical & Civil Engineering
- Design
- Procurement
- Construction
- Operation & Maintenance



MINING BUSINESS STRATEGY ADVISORY & MINERAL ECONOMICS



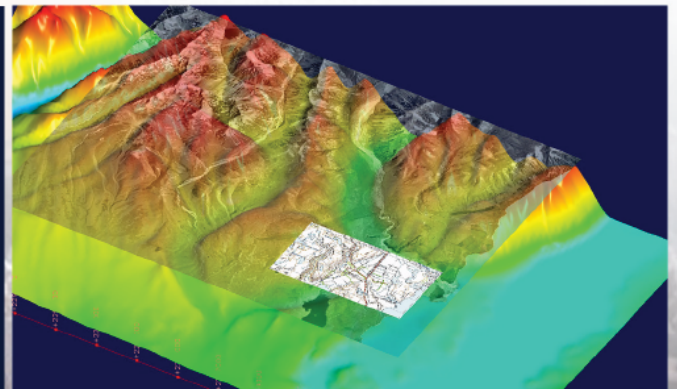
MINING SERVICES

We are qualified to provide the following drill and blasting services:

1. Drilling of Exploration Boreholes & Blast Holes at Opencast Mines Blasting
2. Rock on Ground Packages (Drilling & Blasting) are available.
3. Surface Drilling & Blasting

GEOLOGY & GEOTECHNICAL SERVICES

- Exploration Drilling
- Logging- Geology, Geotech
- Sampling- Core & Soil Profiling
- Analysis
- Geo Modelling
- Competent Persons Reporting





MINING SCOPE

1. SUPPLY & APPLY SECONDARY SUPPORT

- Short and Long anchor hanging wall supports
- Grout packs
- Void fill
- Short-crete
- Guniting of hanging or side walls (underground)
- Wire meshing for reinforcement

2. MINING WORK (SURFACE AND UNDERGROUND)

- Blasting and rehabilitation
- Reclaiming
- Sweeping and vamping.

3. MINING CONSTRUCTION

- Grizzly and box fronts constructions
- Travelling ways
- Structural steel work

ENGINEERING SCOPE

1. CONVEYOR BELTS

- Conveyor belts construction and installation
- Conveyor belts scrapers
- Construction and refurbishing of Conveyor belts tips (static and vibrating)
- Installation of conveyor belts tips
- Maintenance & cleaning.
- Conveyor belt splicing (cold)
- Supply of conveyor belts (fire retard types) of different class category.
- Supply of conveyor belts attendants (underground)
- Construction and installation steel structure, frames, platforms and walkways.
- Installation of safety devices on conveyor belts, for example fire suppression systems, guards and anti-roll back rollers.

2. MAINTENANCE AND LOGISTICS WORK

- Road maintenance (surface and underground)
- Supply of plant screens
- Supply of skilled (artisans) and unskilled labour for TMM maintenance.
- Supply of TMM components, service and maintenance.
- Settler and service water dam construction and cleaning (underground and surface)





3. PLANT MAINTENANCE SCOPE

- Construction and installation of discharge pipelines.
- Plant walkway and conveyor guards' construction and installation.
- Supply and maintenance of pumps, for example dewatering, slurry pumps.

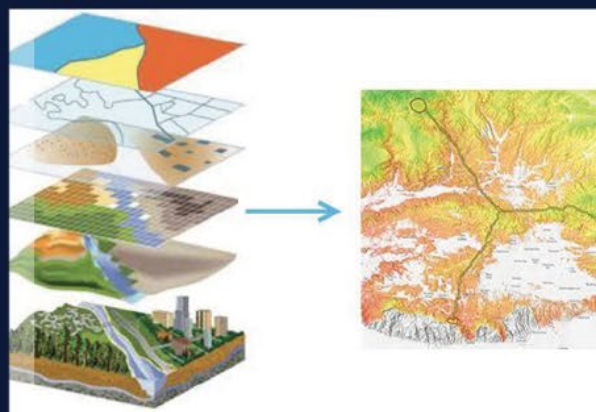
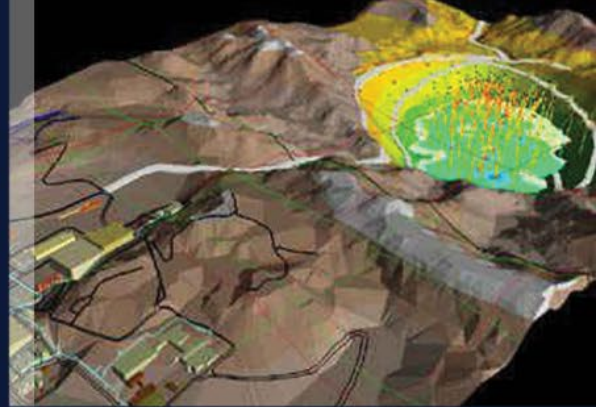
4. ELECTRICAL WORK SCOPE

- Perform switch gear testing, modification and maintenance.
- Testing of electrical and mechanical protection relays and breakers.
- Testing, maintenance and repair of current transformers, high tensile (HT) breakers and panels.
- Perform secondary and primary injections as per legal requirements
- Perform protection testing and setting configurations
- Electrical Cable installations.
- Perform any other electrical work

GIS (GEOGRAPHIC INFORMATION SYSTEM)

A geographic information system (GIS) is a computer system for capturing, storing, checking, and displaying data related to positions on Earth's surface. GIS can show many different kinds of data on one map, such as streets, buildings, and vegetation. This enables people to more easily see, analyze, and understand patterns and relationships.

It can include information about the landscape, such as the location of streams, different kinds of vegetation, and different kinds of soil. It can include information about the sites of factories, farms, and schools, or storm drains, roads, and electric power lines.

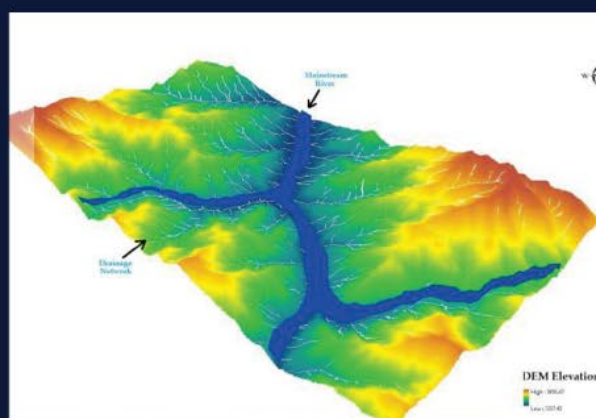


ENVIRONMENTAL MANAGEMENT

- EIAs & BAs
- Feasibility Site Assessment & Risk Evaluation
- Mineral Exploration & Ore Deposit Estimation
- Water Use Licensing Authority

WATER RESOURCE MANAGEMENT

- Groundwater & Surface Water Modelling
- Catchment Management Strategies & Planning
- Flood Hydrology & Flood Lines Modelling



GIS/GEOSPATIAL

- Environmental
- Water Resources
- Wetland Ecosystems
- Climate Change
- Agriculture
- Land Use Land Cover
- Potential Mineral Mapping



AGRICULTURAL MANAGEMENT

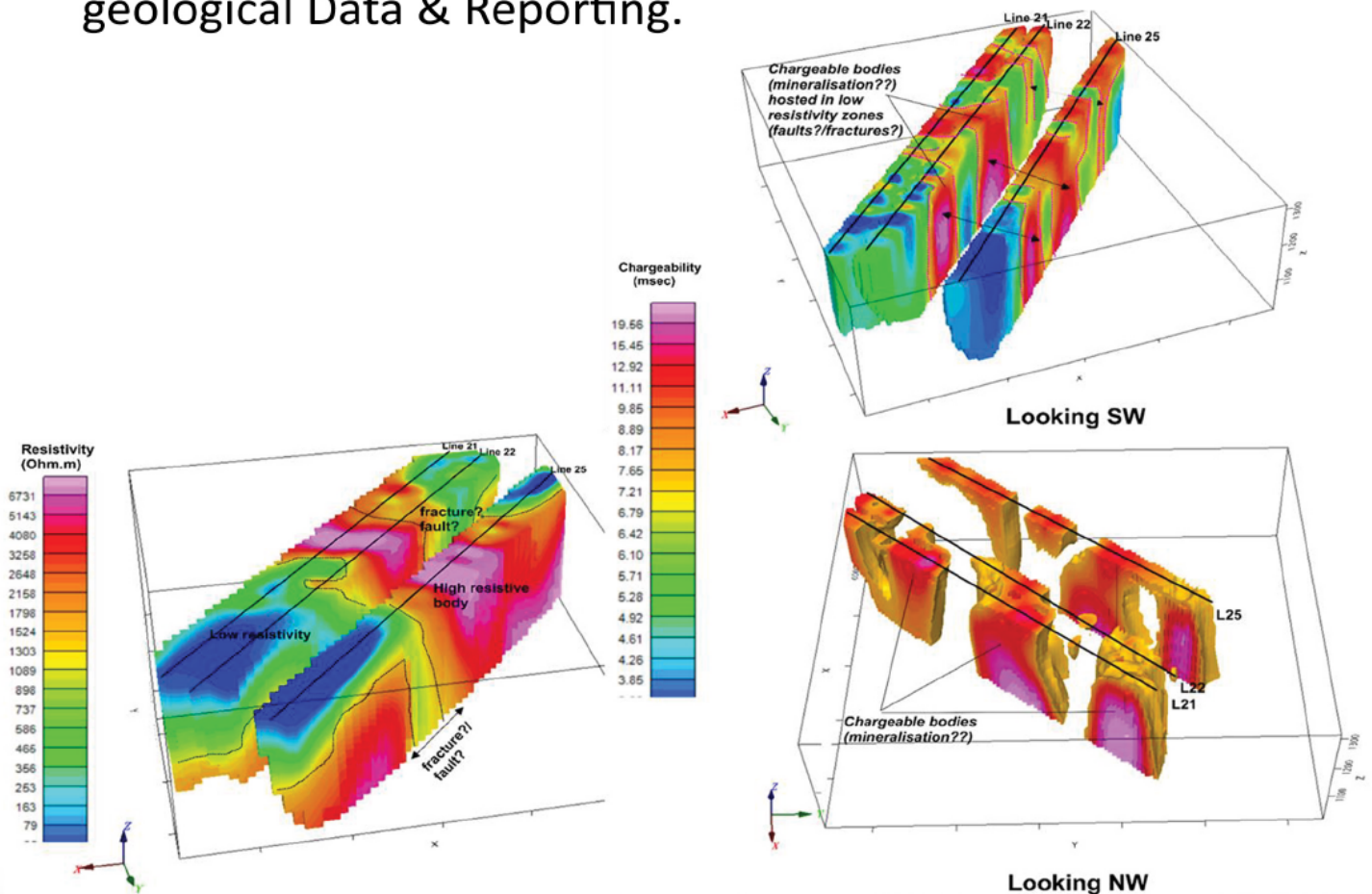
- Crop Health Assessment & Monitoring
- Soil Survey, Sampling, Testing & Analysis
- Yield Mapping & Reports



GEOPHYSICS SERVICES

Induced Polarization and Resistivity Surveys are carried out using an IRIS ELREC Pro multi-channel receiver as the IP and resistivity receiver accompanied by highly specialized geophysics team.

Interpretation and Modelling of geophysical and geological Data & Reporting.





MINERAL PROCESSING ADVISORY

We are qualified to provide advisory different mineral processing functions

Operating Mechanisms & Applications

Mineral Processing flow sheets

Mineral Processing Mass Balances

Determination of efficiencies of comminution and beneficiation processes

- **Mineralogy**
- **Liberation**
- **Crushing**
- **Milling**
- **Screening**
- **Classification**
- **Dense Medium Separation**
- **Gravity Concentration**
- **Flotation**
- **Magnetic Separation**
- **Mass Balances**
- **Flow Sheet Analysis**





METMINEC (PTY) LTD
INSPIRE THE FUTURE



TRAINING

Metminec establishes a culture of Engineers for all personnel involved on all the industry through relevant training that are of the highest quality and adhere to SETA requirements.

We employ only the best, highest qualified facilitators, assessors, moderators and training assistants. Each trainer is professionally trained and experienced to provide you with services that delivers informative and enjoyable training but more importantly making the subject matter easy to understand.

We provide training services in discipline categories: Mining, Construction and Engineering. Our construction programs are aligned with the requirements of construction education and training authority (CETA). Our Engineering programs are registered with merSETA skills programs and we a fully MQA accredited specialist training service provider to the mining sector.

Metminec is ideally positioned to respond to your training needs anywhere within Africa including South Africa, Zimbabwe, DRC, Uganda and Tanzania





DESIGN SOFTWARE & TOOLS

- Mine modelling and planning- Xpac
- Bentley MicroStation (3D&2D)
- Bentley MicroStation (OpenRoads)
- AutoCAD (3D&2D)
- COMOS
- DesSoft
- Navisworks
- Microsoft 365
- Civil 3D
- Prokon Civil & Structural
- ETAP
- PV Syst
- SafeGrid
- Minex
- Data Mine
- Geosoft

OUR CLIENTS

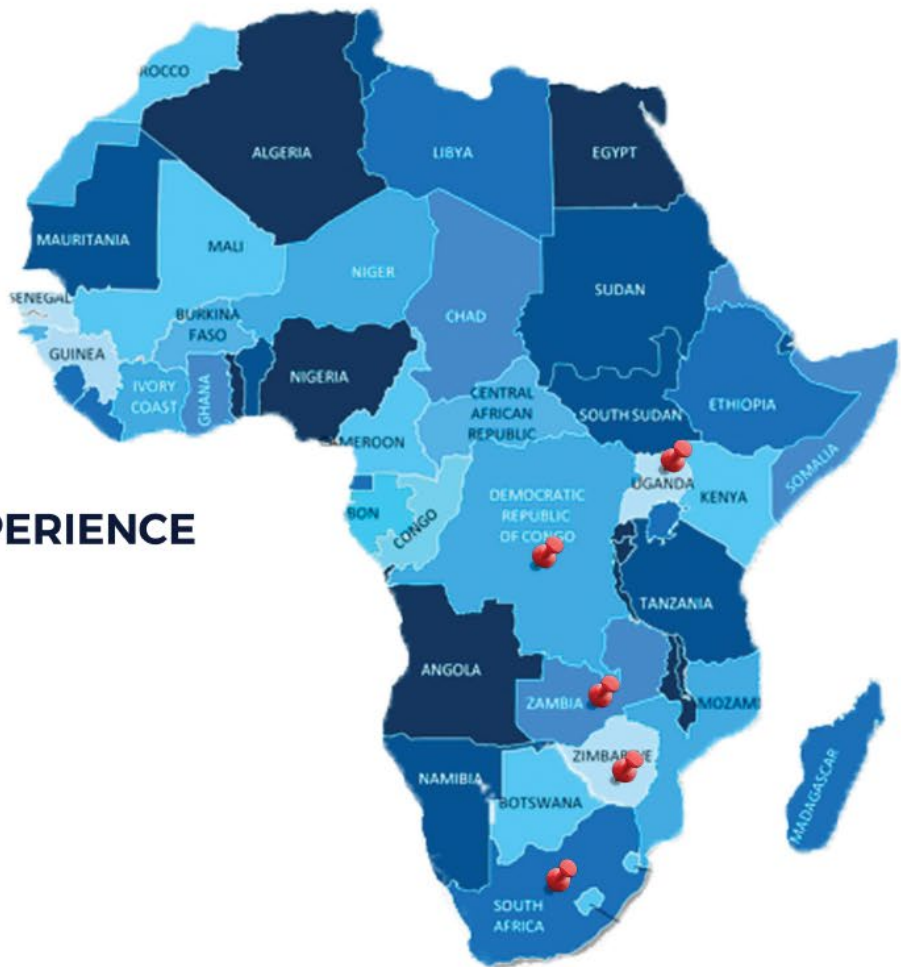


Chancellor House Holdings (Pty) Limited



M&D Holdings

AFRICA FOOTPRINT



BUSINESS EXPERIENCE

- Uganda
- Zambia
- Zimbabwe
- DRC
- South Africa



METMINEC (PTY) LTD
MINING THE FUTURE

BUSINESS ADMINISTRATION INFORMATION



012 345 1065



info@metminec.co.za



www.metminec.co.za



**ROUTE21,
24 VICTORIA LINK,
CENTURION**

**STAND NO 602 ROOIBOKFONTEIN MAPELA
MOKOPANE, LIMPOPO
0610**